

COMPACT PENDANT ARM SERIES 4 SYSTEM 80, TYPE 12

INDUSTRY STANDARDS

NEMA/EEMAC Type 12
IEC 60529, IP55
DIN 40050

APPLICATION

The Compact Series 4 System 80 Pendant Arms are heavy duty systems that are equally flexible in allowing operators to move controls into and out of position, but they can accommodate heavier weight loads. At 3.3 ft. (1 m), the Series 4 System 80 holds 337 lb. (153.2 kg).

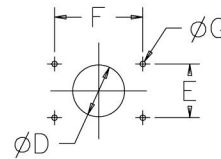
System 80 is recommended for use with Concept HMI and ProLine Sloped Front Enclosures. The hole patterns are different from other systems; cutouts will be different.

SPECIFICATIONS

- Heavy cast steel and cast aluminum couplings and heavy-wall steel tubing provide excellent structural strength
- Each system includes multiple coupling types and three standard tube lengths (.5 m, 1 m and 2 m) which combine to form numerous configurations
- Steel tubing has 5-mm (0.2-inch) wall thickness. Tubing is cold-formed, welded square and rectangular steel tubes.
- Tubing provides structural integrity and acts as a conduit for equipment wiring
- Removable access plates (provided with set-up joint, elbow and elbow couplings) simplify cable installation inside tubing
- Heavy-duty bearings in all movable joints for convenient, smooth operation and enhanced durability to withstand stresses of repeated use
- Deep tube fittings in all couplings
- Adjustable setscrews allow for accurate alignment of supporting tubes
- Gasket is oil-resistant neoprene

FINISH

Couplings are RAL 7035 light-gray polyester powder paint. Access plates and tubing are light-gray. Bellows are black.

Standard Cutout for Mounting


C2804-C

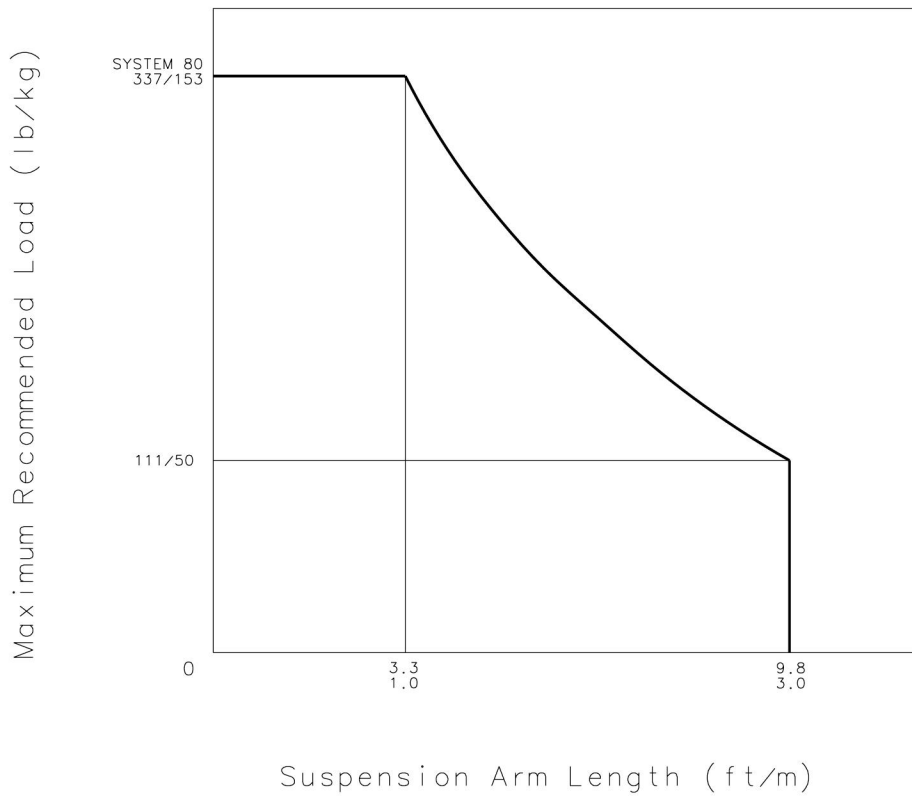
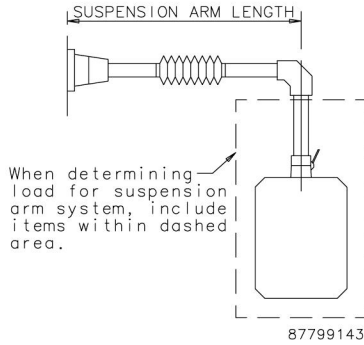
Dimensions for Cutouts

System	80 (mm)	80 (in.)
Set-Up Joint		
Ø D MAX	105	4.13
E	122	4.82
F	122	4.82
Ø G	13	0.51
Wall Joint or Cable Wall Joint		
Ø D MAX	80	3.15
E	80	3.15
F	138	5.43
Ø G	13	0.51
Wall Flange or Base Bracket		
Ø D MAX	105	4.13
E	122	4.80
F	122	4.80
Ø G	13	0.51
Flange Coupling or Flange Elbow Coupling		
Ø D MAX	91	3.58
E	80	3.15
F	80	3.15
Ø G	7	0.26
Angle Adapter Plate		
Ø D MAX	91	3.58
E	80	3.15
F	120	4.72
Ø G	7	0.26

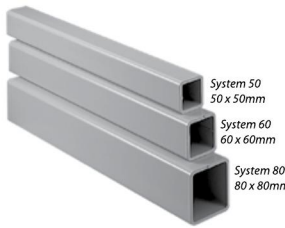
SYSTEM LOAD CAPACITY

The Series 4 Pendant Arm load graph is the result of load capacity tests. Please contact Hoffman for specific application information.

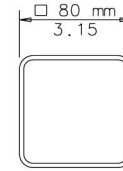
Load Diagram



89001155



Square and rectangular tubes are cold-formed, hollow, welded steel with 5-mm wall thickness. Finish is RAL 7035 light-gray polyester powder paint. Tubing provides structural integrity and acts as a conduit for equipment wiring. Available in 500-, 1000- and 2000-mm lengths. All pendant arm connections are sized to fit appropriate tube sizes.



87799136

BULLETIN: CS4

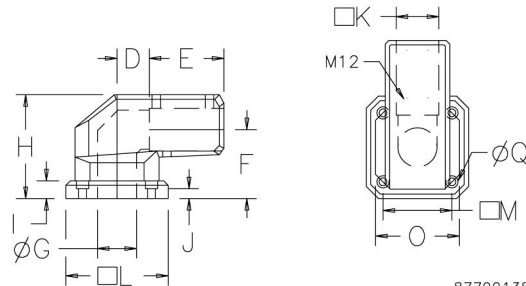
Catalog Number	System	Size mm/in.	Length mm/in.	Weight (lb.)	External Dimensions mm/in.	Wall Thickness mm/in.	Inside Cross Section (sq. cm)	Inside Cross Section (sq. in.)
CCS8T5	80	80 x 80	489	13.0	80 sq.	5	49	7.60
		3.10 x 3.10	19.25		3.15	0.20		
CCS8T10	80	80 x 80	991	24.5	80 sq.	5	49	7.60
		3.10 x 3.10	39.00		3.15	0.20		
CCS8T20	80	80 x 80	1988	49.0	80 sq.	5	49	7.60
		3.10 x 3.10	78.25		3.15	0.20		

SET-UP JOINT



Cast iron finished with RAL 7035 light-gray polyester powder paint. Mounts equipment to horizontal surface. Permits pendant arm to be rotated or turned 306 degrees. Pivot bearing is maintenance-free. Setscrews, removable access plate and gasket are included. Mounting hardware is not provided.

BULLETIN: CS4



Side View

Top View

87799138

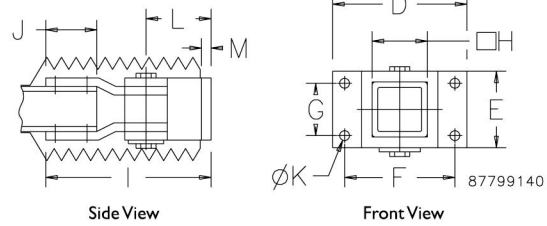
Catalog Number	System	L mm/in.	H mm/in.	D mm/in.	E mm/in.	F mm/in.	G mm/in.	I mm/in.	J mm/in.	K mm/in.	M mm/in.	O mm/in.	Q mm/in.	Weight (lb.)
CCS8SJLG	80	174	162	56	120	107	75	25	12	80	122	152	13	45.5
		6.85	6.38	2.19	4.72	4.21	2.95	0.98	0.47	3.15	4.80	5.98	0.51	

WALL JOINT



Welded steel plate construction finished with RAL 7035 light-gray polyester powder paint. Mounts equipment to vertical surface. Swivel range is approximately 180 degrees. Includes bellows with zipper, seals and setscrews. Adjustable tension at pivot point. Rotational limiter is optional. Mounting hardware not provided.

BULLETIN: CS4



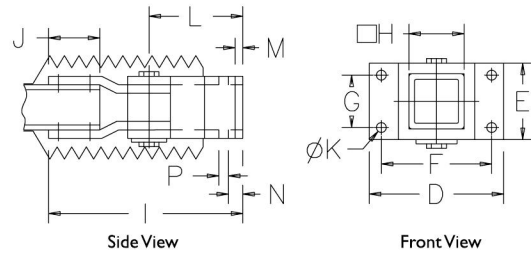
Catalog Number	System	D mm/in.	E mm/in.	F mm/in.	G mm/in.	H mm/in.	I mm/in.	J mm/in.	K mm/in.	L mm/in.	M mm/in.	Weight (lb.)
CCS8WJRLG	80	161 6.34	104 4.09	138 5.43	80 3.15	80 3.15	300 11.81	100 3.94	13 0.51	135 5.31	10 0.39	21.6

CABLE WALL JOINT



Welded steel plate construction finished with RAL 7035 light-gray polyester powder paint. Mounts equipment to vertical surface. Provides cable access to inside of pendant system from above or below. Swivel range approximately 180 degrees. Includes bellows with zipper, seal and setscrews. Adjustable tension at pivot point. Rotation limiter is optional. Mounting hardware not provided.

BULLETIN: CS4



C2753-C

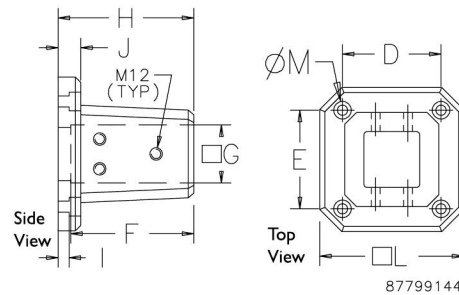
Catalog Number	System	D mm/in.	E mm/in.	F mm/in.	G mm/in.	H mm/in.	I mm/in.	J mm/in.	K mm/in.	L mm/in.	M mm/in.	N mm/in.	P mm/in.	Weight (lb.)
CCS8WJCRLG	80	165 6.50	104 4.09	138 5.43	80 3.15	80 3.15	330 12.99	100 3.94	13 0.51	165 6.50	10 0.39	20 0.79	60 2.36	20.9

WALL FLANGE



Wall Flange expands mounting options to include wall-mount as well as horizontal tube applications. Cast iron construction finished with RAL 7035 light-gray polyester powder paint. Setscrews, gasket and seals are included. Mounting hardware not provided.

BULLETIN: CS4



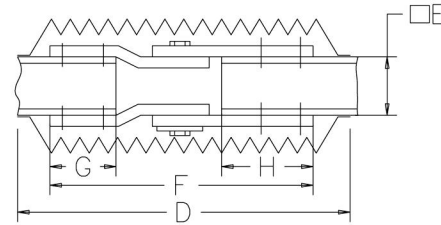
87799144

Catalog Number	System	L mm/in.	H mm/in.	D mm/in.	E mm/in.	F mm/in.	G mm/in.	I mm/in.	J mm/in.	M mm/in.	Weight (lb.)
CCS8WFLG	80	174 6.85	160 6.30	122 4.80	122 4.80	143 5.63	80 3.15	12 0.47	25 0.98	13 0.51	20.1



Welded steel plate construction finished with RAL 7035 light-gray polyester powder paint. Mounts to pendant tube. Swivel range is approximately 180 degrees. Setscrews and bellows with zipper are included. Rotational limiter is optional.

BULLETIN: CS4



87799146

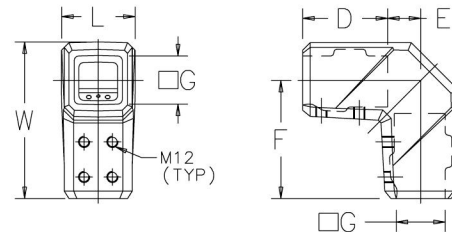
Catalog Number	System	D mm/in.	E mm/in.	F mm/in.	G mm/in.	H mm/in.	Weight (lb.)
CCS8IJRLG	80	400 15.75	80 3.15	330 12.99	100 3.94	100 3.94	21.4

ELBOW



Cast aluminum with RAL 7035 light-gray polyester powder paint finish. Removable access plate. Setscrews and gaskets are included.

BULLETIN: CS4



87799402

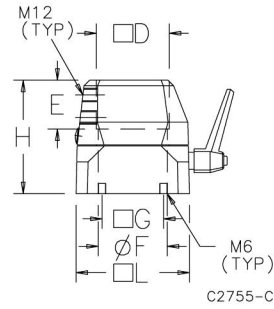
Catalog Number	System	L mm/in.	W mm/in.	D mm/in.	E mm/in.	F mm/in.	G mm/in.	Weight (lb.)
CCS8ELLG	80	108 4.25	225 8.86	120 4.72	50 1.97	170 6.69	80 3.15	18.7

FLANGE COUPLING



Flange Coupling mounts to enclosure, enabling enclosure to be rotated 300 degrees. Enclosure can be locked in position. Safety stop and maintenance-free bearing. Finish is RAL 7035 light-gray polyester powder paint. Includes installation instructions, setscrews, gaskets and mounting hardware.

BULLETIN: CS4



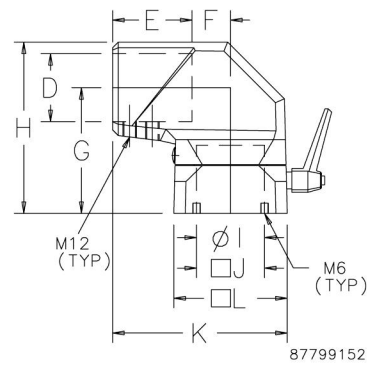
Catalog Number	System	L mm/in.	H mm/in.	D mm/in.	E mm/in.	F mm/in.	G mm/in.	Weight (lb.)
CCS8FCLG	80	120 4.72	110 4.33	80 3.15	53 2.09	91 3.58	80 3.15	7.2

FLANGE ELBOW COUPLING



Coupling mounts to enclosure, enabling enclosure to be rotated 300 degrees. Enclosure can be locked in position. Removable access plates. Finish is RAL 7035 light-gray polyester powder paint. Setscrews, gasket and mounting hardware are included.

BULLETIN: CS4



Catalog Number	System	L mm/in.	H mm/in.	D mm/in.	E mm/in.	F mm/in.	G mm/in.	I mm/in.	J mm/in.	K mm/in.	Weight (lb.)
CCS8FECLG	80	120 4.72	173 6.81	80 3.15	90 3.54	54 2.13	121 4.76	91 3.58	80 3.15	204 8.03	9.5

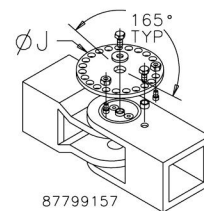
ROTATION LIMITER



Accessory for use with Wall Joint, Cable Wall Joint and Intermediate Joint. Limits the rotation of these joints which normally rotate 180 degrees. Rotation Limiter provides stops in 15-degree increments. The limiter is a heavy-duty steel disk that attaches to the pivot point on each joint. Moveable stop pins provide adjustment.

BULLETIN: CS4

Catalog Number	System	J (mm)	J (in.)	Weight (lb.)
CCS814RL	80	119	4.70	1.3

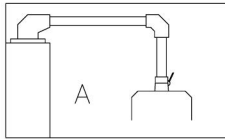


SYSTEM CONFIGURATIONS

Note to Specifier:

Select suspension system sizing using the Compact Series 4 System 80 load capacity chart.

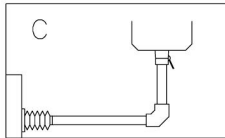
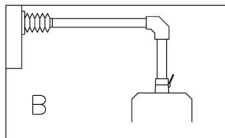
1. Tube catalog numbers are not included in configuration tables.
2. There are multiple configurations possible with many of the options shown. Components can be inverted. For illustration purposes, configurations may show how components can be inverted or used with varying enclosure couplings.



87799186

A

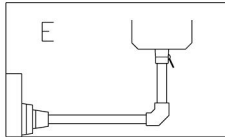
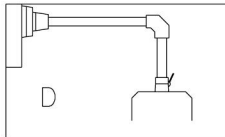
Description	Qty.	Catalog Number
Set-up joint	1	CCS8SJLG
Elbow	1	CCS8ELLG
Flange coupling or Swivel tilt	1	CCS8FCLG CCS8STBLG



87799187

B AND C

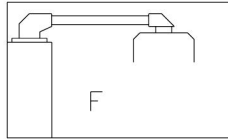
Description	Qty.	Catalog Number
Wall joint or Cable wall joint	1	CCS8WJRLG CCS8WJCRLG
Elbow	1	CCS8ELLG
Flange coupling or Swivel tilt	1	CCS8FCLG CCS8STBLG



87799189

D AND E

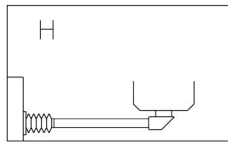
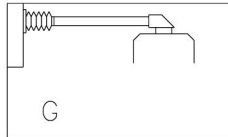
Description	Qty.	Catalog Number
Wall flange	1	CCS8WFLG
Elbow	1	CCS8ELLG
Flange coupling or Swivel tilt	1	CCS8FCLG CCS8STBLG



87799190

F

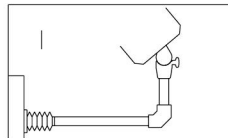
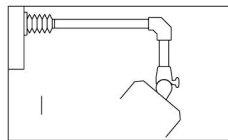
Description	Qty.	Catalog Number
Set-up joint	1	CCS8SJLG
Flange elbow coupling	1	CCS8FECLG



87799191

G AND H

Description	Qty.	Catalog Number
Wall joint or Cable wall joint	1	CCS8WJRLG
	1	CCS8WJCRLG
Flange elbow coupling	1	CCS8FECLG

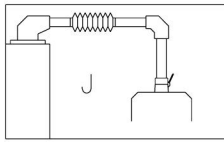


87799193

I

Description	Qty.	Catalog Number
Wall joint or Cable wall joint	1	CCS8WJRLG
	1	CCS8WJCRLG
Elbow	1	CCS8ELLG
Swivel tilt ^a	1	CCS8STBLG

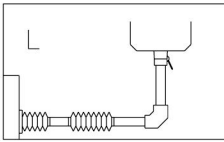
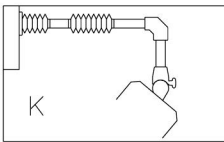
^aMaximum load for overhead applications is 110 lb. (50 kg) including enclosure.



87799194

J

Description	Qty.	Catalog Number
Set-up joint	1	CCS8SJLG
Intermediate joint	1	CCS8IJRLG
Elbow	1	CCS8ELLG
Flange coupling or Swivel tilt	1	CCS8FCLG CCS8STBLG

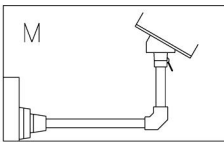


87799195

K AND L

Description	Qty.	Catalog Number
Wall joint or Cable wall joint	1	CCS8WJRLG CCS8WJCRLG
Intermediate joint	1	CCS8IJRLG
Elbow	1	CCS8ELLG
Flange coupling or Swivel tilt ^a	1	CCS8FCLG CCS8STBLG

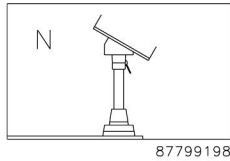
^aMaximum load for overhead applications is 110 lb. (50 kg) including enclosure.



87799197

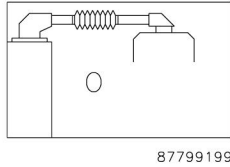
M

Description	Qty.	Catalog Number
Wall flange	1	CCS8WFLG
Elbow	1	CCS8ELLG
Flange coupling	1	CCS8FCLG



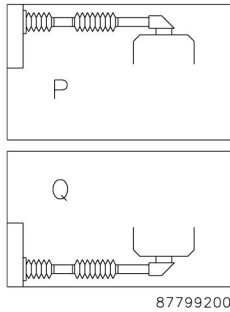
N

Description	Qty.	Catalog Number
Base bracket	1	CCS8BBLG
Flange coupling	1	CCS8FCLG
Angle adapter 15° or Angle adapter 30°	1	CCS568AA15LG CCS568AA30LG



O

Description	Qty.	Catalog Number
Set-up joint	1	CCS8SJLG
Intermediate joint	1	CCS8IJRLG
Flange elbow coupling	1	CCS8FECLG



P AND Q

Description	Qty.	Catalog Number
Wall joint or Cable wall joint	1	CCS8WJRLG CCS8WJCRLG
Intermediate joint	1	CCS8IJRLG
Flange elbow coupling	1	CCS8FCLG

Notes

